

THERMOSTAT STANDARD - MCD3

A Comfort Heat floor heating system has been installed in your floor. Floor heating warms from the ground up providing an unparalleled feeling of comfort. This heating system is controlled by an electronic thermostat and floor sensor for optimum temperature control and efficiency.

MCD3 DETAILS

The MCD3 thermostat is a reliable, entry level floor heating controller designed for straight forward operation. It allows users to select a fixed temperature or apply a programmable schedule. Once the floor reaches the desired temperature, the system automatically cycles on and off to maintain consistent, comfortable warmth.

PRIOR TO TURNING ON

Concrete slabs, screeds and tile glues must be fully cured before turning the heating system on. Wait at least 3 weeks and when turning on for the first time, increase the floor temperature gradually over 2-3 days.

Under carpet and timber systems can be turned on once installation is complete.

CABLE WARRANTY & SUGGESTED FLOOR TEMPERATURES

AREAS	TILE [BATH]	TILE [LARGE AREA]	INSLAB	CARPET	TIMBER
SUGGESTED TEMPERATURE	24-28°C	21-22°C	21°C	19-21°C	24°C
CABLE WARRANTY	10 years	10 years	10 years	5 years	5 years



TECHNICAL DATA - MCD3

Supply Voltage:	240VAC, 50/60hz
Output Relay:	16A SPST, 3600W max
Switching Differential:	0.4 degC
Built-in Switch:	2 pole 16A
Temperature Range:	0/+40 degC
Housing/protection:	IP21
Dimensions (HxWxD):	115mm x 84mm x 40mm
Build-in Depth:	20mm
Sensor Length:	3m
Mounted:	Vertical/Horizontal Flush mounted
Warranty:	2 years

MCD3 OPERATION SETTINGS

GUIDELINES

The MCD3 is an entry level thermostat, with a simplified control interface. The MCD3 has a standard timer mode that enables you to set the temperature and time to a programmed schedule or used in manual mode for a consistent temperature.

TURNING ON

> Open the front cover of the thermostat and slide the power switch ON. (Left side of thermostat screen)

The thermostat screen is set to display the **set point temperature** and not the current running temperature. The three heating squiggles at the top of the thermostat screen will turn on when the floor is heating.

CHANGE FRONT COVER

The MCD3 comes with an alternate plain cover plate for a minimal look. To change the cover;

- > Open the cover wide
- > Hold plate close to the thermostat and pull down.
- > Align alternate cover at top of thermostat and apply pressure on the bottom.

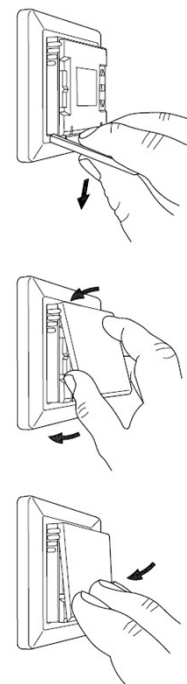
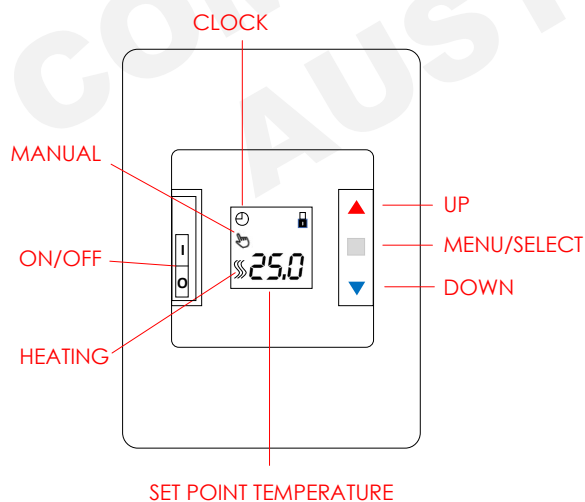
NAVIGATION

Press "■" for 3 seconds to enter the **menu mode**.

Use "▲" and "▼" to navigate through the settings.

Press "■" to select and change the value with "▲" or "▼".

Press "■" to return to the settings.



MCD3 MENU & SCHEDULE SETTINGS

SET UP

- > Press Menu/Select "■" for 3 seconds to access **menu mode**.
- > Set Time - **CLc** (Clock)
- > Set Day - **dAY** (Day)
- > Set Schedule - **SchE** (Schedule Type)

Different schedule types:

- 5-2** : Monday to Friday with 4 events, Saturday and Sunday with 2 events
- 6-1** : Monday to Saturday with 4 events, Sunday with 2 events
- 1E2** : Monday to Sunday with 2 events
- 1E4** : Monday to Sunday with 4 events
- 7E4** : Monday to Sunday are individual, with 4 events

- > Select Done - **donE** (Done)

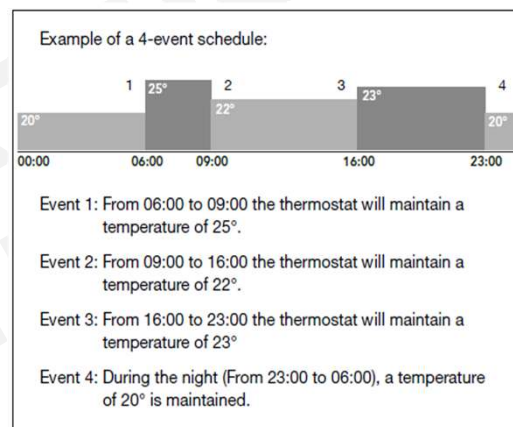
MANUAL MODE

- > To activate or deactivate manual override, quickly press and release "■".
- > Press "▲" and "▼" to set the setpoint temperature.

PROGRAM SCHEDULE MODE

- > Press "▲" and "▼" together for 3 seconds to enter **schedule mode** settings.
- > You can now change the time and temperature setpoint for events in the chosen schedule.
- > Use "▲" and "▼" to change the time and confirm with "■".
- > Use "▲" and "▼" to change the temperature setpoint and return with "■".

Note: Repeat either 2 or 4 times for each day, depending on the number of events in the chosen schedule



FACTORY RESET

- > Press "■" for 8 seconds do a factory reset.

CHILD LOCK

- > Press "▲" and "▼" simultaneously for 8 seconds to lock or unlock.

If using the schedule mode we recommend turning OFF both Open Window and Adaptive Function.

OPEN WINDOW - OPEn (Open window)

- > Press "■" for 3 seconds
- > Scroll through options until **OPEn**
- > Select "OFF"

ADAPTIVE FUNCTION - AdAP (Adaptive start)

- > Press "■" for 3 seconds
- > Scroll through options until **AdAP**
- > Select "OFF"

MENU MODE SETTINGS

Menu mode allows you to set a range of values to define heating options, times and temperatures. See the MCD3 full manual to view the complete range of options.

Settings	Options		Factory setting
cLc (Clock)	00:00 - 24:00		00:00
dRY (Day)	Mon, TuE, WEd, tHu, Fri, SAT, Sun		Mon
SchE (Schedule)	5-2, 6-1, 1E2, 1E4, 7E4		5-2
Lcd1 (Lcd)	Set, cLc, --		clc
Lcd2 (Lcd)	Set, tP		Set
rCE (Remote controlled temp.)	5°C - 25°C		10°C
OPEN (Open window)	On/Off		On
RdRP (Adaptivestart)	On/Off		On
RdJ (Adjust)	-9.9°C - +10°C		0°C
-Su (Software Version)	Readout value		Readout value
-FEP (Floor temp.)	Readout value		Readout value
-rEP (Room temp.)	Readout value		Readout value
PL (Power Limit)	0-30		
PULS (Pulse Width Modulation)	Aut	CYHi: 10-60 CYLo: 10-30	30 15
	Off	DIFF: 0.3°C - 10°C	0.4
	On	CYcL: 10-60	30
FLL (Floor limit low)	0°C - 40°C		15°C
FLH (Floor limit high)	0°C - 40°C		27°C
ELL (Temp. limit low)	0°C - 40°C		0°C
ELH (Temp. limit high)	0°C - 40°C		40°C
RPP (sensor application)	r	Room	rF
	F	Floor	
	C	Regulator	
	rF	Room w. floor limits	
	rE	External room sensor	
donE (Done)			

TROUBLE SHOOTING

If an error message occurs, the thermostat will display one of the following errors;

E0 : Internal failure. The thermostat is defective. Thermostat must be replaced.

E1 : Internal room sensor defective or short-circuited. Thermostat must be replaced.

E2 : External floor sensor disconnected, defective or short-circuited. Requires floor sensor reconnection or replacement.

E5 : Internal overheating. Installation requires inspection.

Comfort Heat Australia Pty Ltd
 ABN 64 089778941
 8/11 Ponderosa Parade Warriewood NSW 2103
 PO Box 220 Mona Vale 1600

02 9979 8600
 1300 13WARM
 sales@comfortheat.com.au
 www.comfortheat.com.au