



under-tile heating ultra-thin

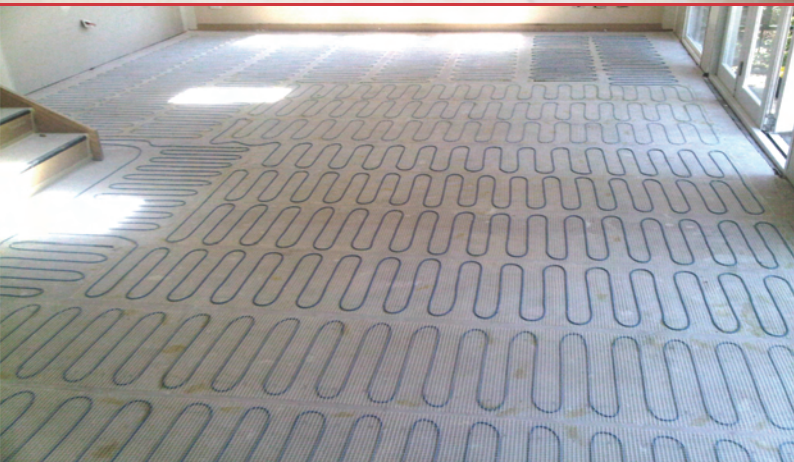
The Comfort Heat under-tile heating mats can be used in a variety of underfloor heating installations and are suitable for large or small areas.

ultra-thin

The ultra-thin mats are installed directly beneath the floor covering in the tile adhesive, adding no height to your floor levels.

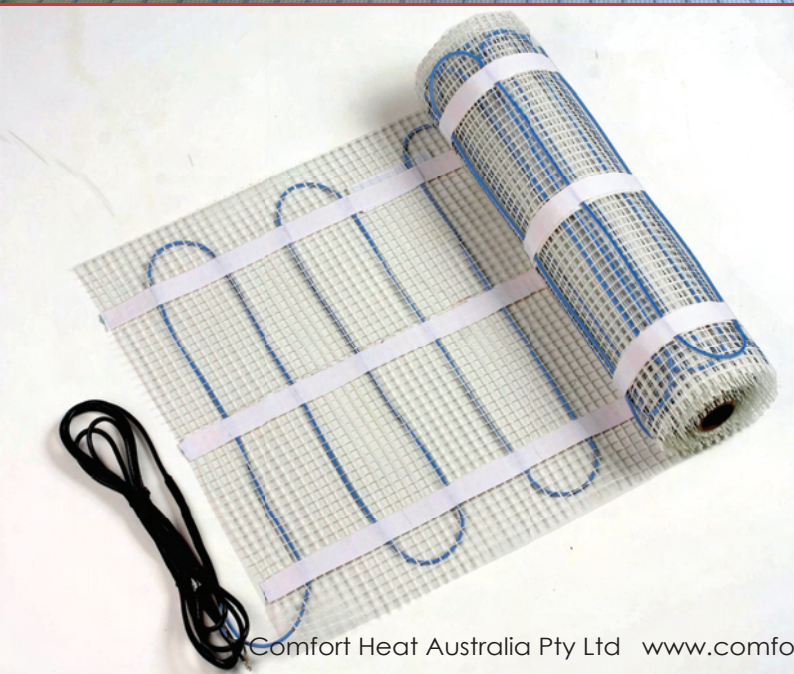
They come in twin conducting mats both 300mm wide and 500mm wide and have an output of 150 W/m².

Ultra-thin mats have a fast response time.



TECHNICAL DATA

Cable Type:	Twin conductor heating cable with earth screen
Construction:	Multi-stranded heating wire with double insulation, earth screen & sheath. Woven into a mat.
Insulation Rating:	4000 V
Rated Voltage:	230 Volt AC
Rated output:	150W/m ²
Cold Tail Length:	3 metre with splice connection
Cable Diameter:	3.5mm
Cable Standard:	IEC800 Class II
Warranty:	10 years



ELECTRICAL LOADS & SIZES

DESCRIPTION	AREA m ²	LENGTH	WATTS
FHMT - 3/1	1.0	0.3m x 3.33m	150W
FHMT - 3/1.5	1.5	0.3m x 5m	225W
FHMT - 3/2	2.0	0.3m x 6.67m	300W
FHMT - 3/2.5	3.0	0.3m x 8.33m	450W
FHMT - 3/3	3.5	0.3m x 10m	525W
FHMT - 3/3.5	4.0	0.3m x 11.6m	480W
FHMT - 3/4	4.5	0.3m x 13.33m	600W
FHMT - 3/4.5	4.5	0.3m x 15m	675W
FHMT - 3/5	5.0	0.3m x 16.67m	750W
FHMT - 3/6	6.0	0.3m x 20m	900W
FHMT - 3/7	7.0	0.3m x 23.33m	1050W
FHMT - 5/1	1.0	0.5m x 2m	150W
FHMT - 5/1.5	1.5	0.5m x 3m	225W
FHMT - 5/2	2.0	0.5m x 4m	300W
FHMT - 5/2.5	2.5	0.5m x 5m	450W
FHMT - 5/3	3.0	0.5m x 6m	525W
FHMT - 5/3.5	3.5	0.5m x 7m	480W
FHMT - 5/4	4.0	0.5m x 8m	600W
FHMT - 5/4.5	4.5	0.5m x 9m	675W
FHMT - 5/5	5.0	0.5m x 10m	750W
FHMT - 5/6	6.0	0.5m x 12m	900W
FHMT - 5/7	7.0	0.5m x 14m	1050W
FHMT - 5/8	8.0	0.5m x 16m	1200W
FHMT - 5/9	9.0	0.5m x 18m	1350W
FHMT - 5/10	10.0	0.5m x 20m	1500W
FHMT - 5/11	11.0	0.5m x 22m	1650W
FHMT - 5/12	12.0	0.5m x 24m	1800W