

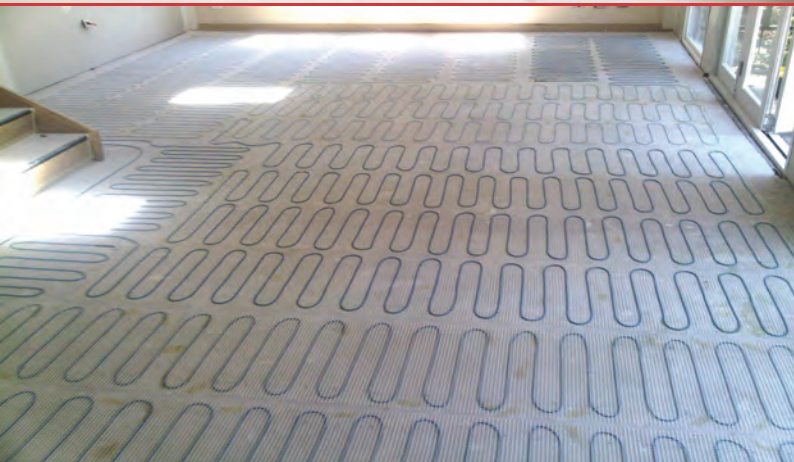


under-tile heating ultra-thin

The Comfort Heat under-tile heating mats can be used in a variety of underfloor heating installations and are suitable for large or small areas.

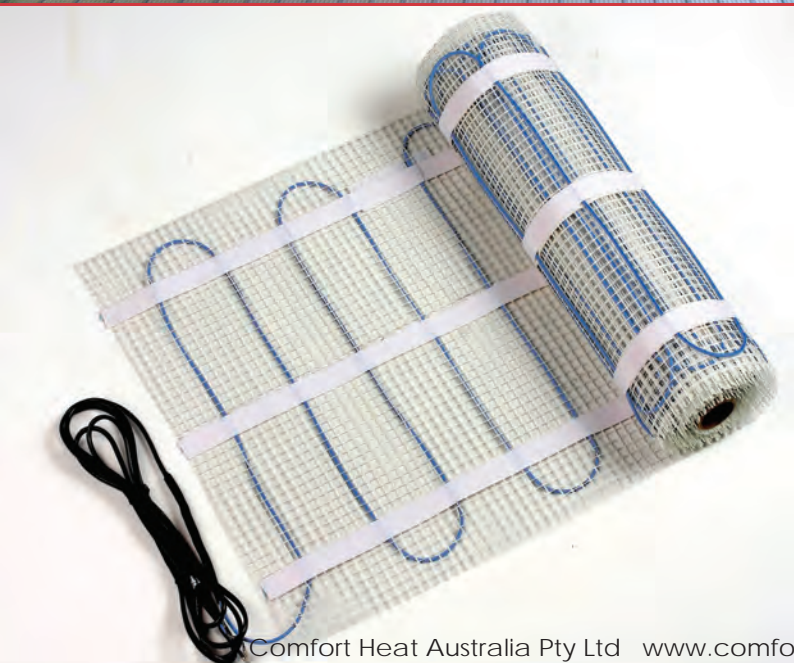
ultra-thin

Ultra-thin 300 & 500 mats are used in the tile adhesive. The ultra-thin mats are installed directly beneath the floor covering in the tile adhesive, adding no height to your floor levels. They come in twin conducting mats either 300mm wide or 500mm wide and have an output of 150W/m². Ultra-thin mats have a very fast response time.



TECHNICAL DATA

Cable Type:	Twin conductor heating cable with earth screen
Construction:	Multi-stranded heating wire with double insulation, earth screen & sheath
Insulation Rating:	4000 V
Rated Voltage:	230 Volt AC
Rated output:	150W/m ²
Cold Tail Length:	3 metre with splice connection
Cable Diameter:	3mm
Cable Standard:	IEC800 Class II
Warranty:	10 years



ELECTRICAL LOADS & SIZES

DESCRIPTION	AREAm ²	LENGTH	WATTS
FHMT - 3/1	1.0	0.3m x 3.3m	150W
FHMT - 3/1.5	1.5	0.3m x 5m	225W
FHMT - 3/2	2.0	0.3m x 6.7m	300W
FHMT - 3/2.5	3.0	0.3m x 8.3m	375W
FHMT - 3/3	3.0	0.3m x 10m	450W
FHMT - 3/3.5	3.5	0.3m x 11.7m	525W
FHMT - 3/4	4.0	0.3m x 13.3m	600W
FHMT - 3/4.5	4.5	0.3m x 15m	675W
FHMT - 3/5	5.0	0.3m x 16.7m	750W
FHMT - 3/6	6.0	0.3m x 20m	900W
FHMT - 3/7	7.0	0.3m x 23.33m	1200W
FHMT - 5/1	1.0	0.5m x 2.0m	150W
FHMT - 5/1.5	1.5	0.5m x 3.0m	225W
FHMT - 5/2	2.0	0.5m x 4.0m	300W
FHMT - 5/2.5	2.5	0.5m x 5.0m	375W
FHMT - 5/3	3.0	0.5m x 6.0m	450W
FHMT - 5/3.5	3.5	0.5m x 7.0m	525W
FHMT - 5/4	4.0	0.5m x 8.0m	600W
FHMT - 5/4.5	4.5	0.5m x 9.0m	675W
FHMT - 5/5	5.0	0.5m x 10.0m	750W
FHMT - 5/6	6.0	0.5m x 12.0m	900W
FHMT - 5/7	7.0	0.5m x 14.0m	1050W
FHMT - 5/8	8.0	0.5m x 16.0m	1200W
FHMT - 5/9	9.0	0.5m x 18.0m	1350W
FHMT - 5/10	10.0	0.5m x 20.0m	1500W
FHMT - 5/11	11.0	0.5m x 22.0m	1650W
FHMT - 5/12	12.0	0.5m x 24.0m	1800W